

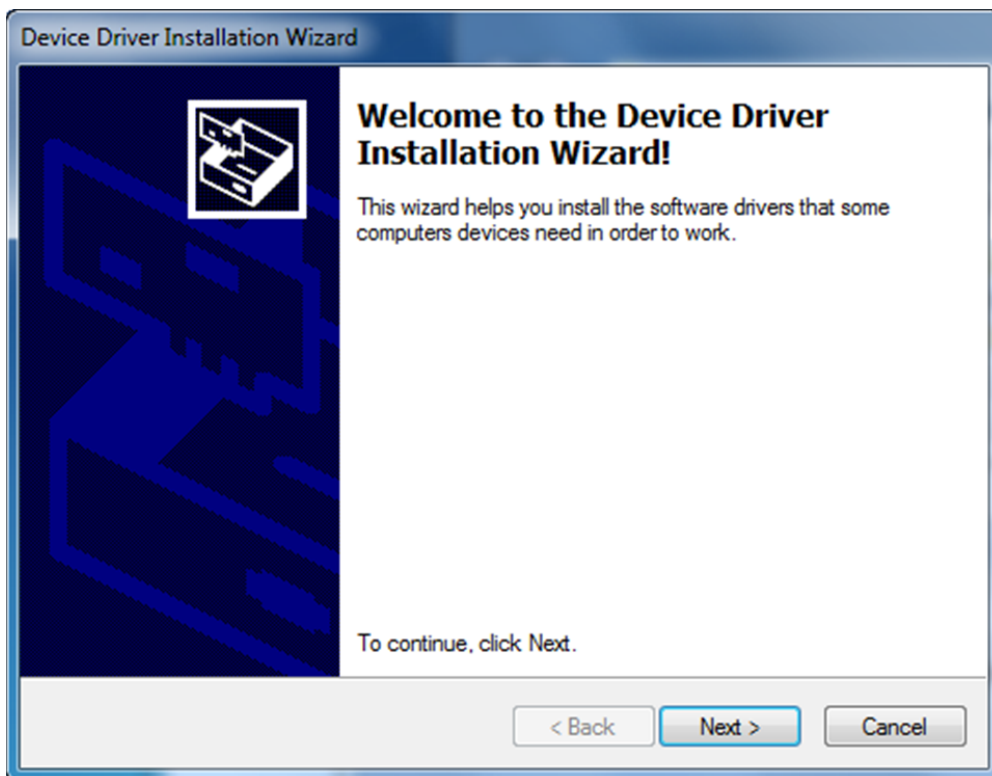
Installing the Nor13x/Nor14x device driver

The Nor13x/Nor14x device driver is normally distributed and installed with other Norsonic software. It may also be distributed and installed as a standalone package.

In case of standalone distribution, please double-click the exe-file to start the installation.

Windows Vista, Windows 7, Windows 8.x.

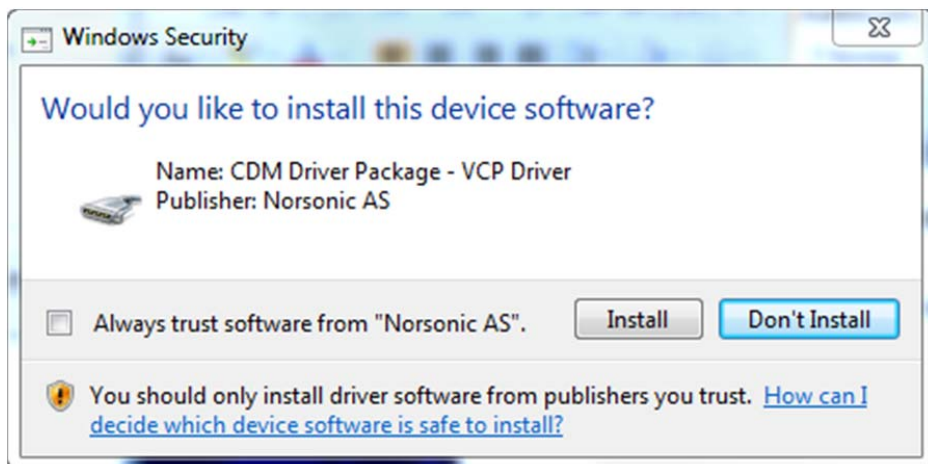
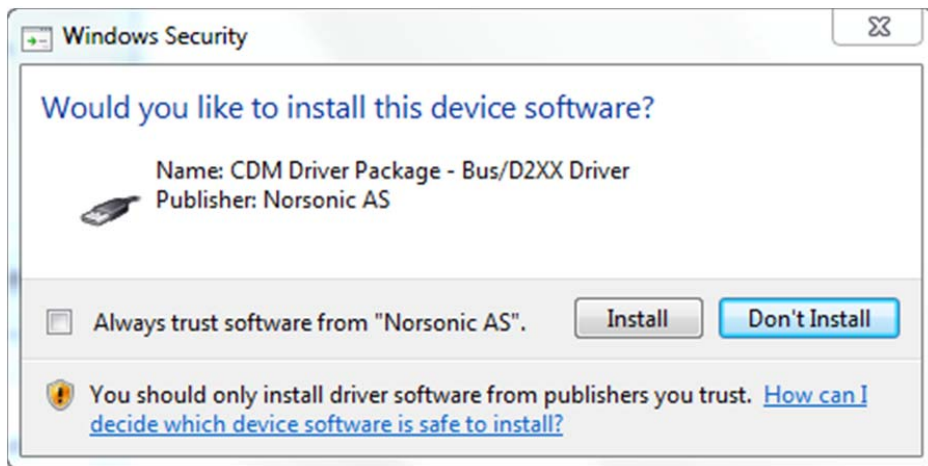
When the driver-installation starts, the following dialog-window will appear. Click "Next".



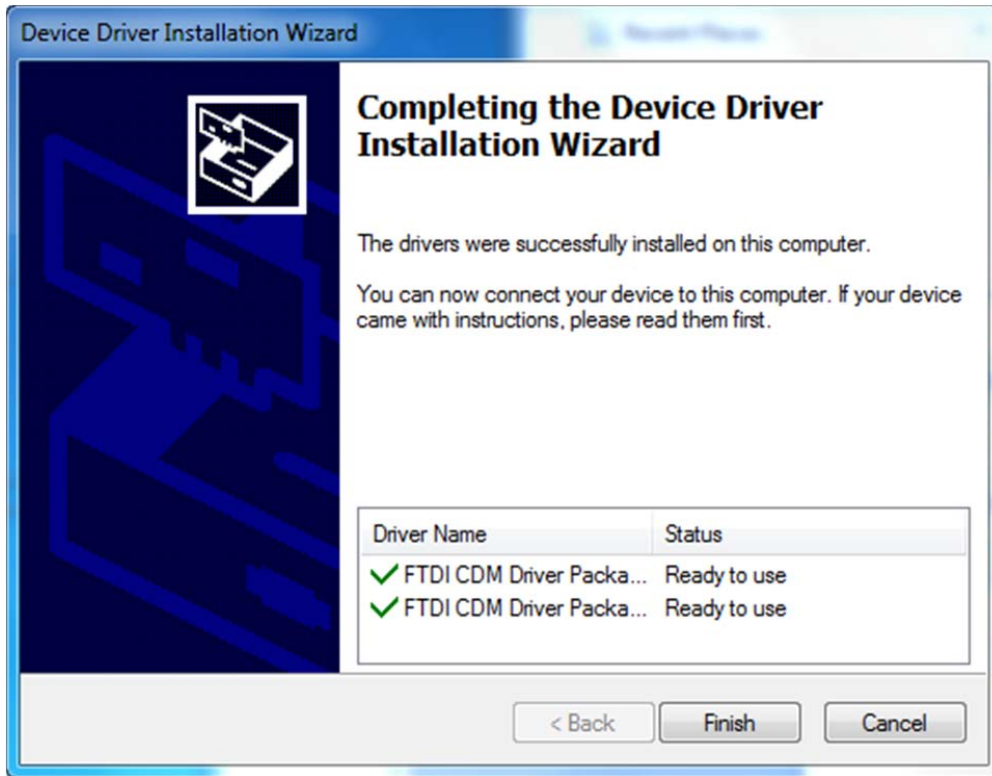
The next two dialog-windows may appear.

The driver consists of two parts, and there will be a dialog-window asking if you would like to install the device software for both of them.

Click "Install".



When the device driver installation is complete, the following dialog-window will appear. Click "Finish".



After you have plugged in the Nor13x/Nor14x for the first time, it may take some time (less than a minute) before Windows "activates" the driver.

After you have plugged in the Nor13x/Nor14x, you may check if the driver is working properly by starting Device Manager and checking the "Ports" section. Here you will also see which COM port is assigned to the attached device.

